



PRIMO



ARIA WHEELS

Marco Paolucci and Stefano Esposito, both industrial designers, decided to put their different skills, experiences and passions at the service of a common goal: to create **mobility products with high design and construction standards.**

"We started to develop our project starting from an assumption: Movement is a right and everyone should be able to enjoy it in the same way. Mobility products, regardless of who the end user is, deserve the same attention in design, as well as in aesthetic and technological research."

Starting from these foundations, Aria Wheels was born in 2014.

THE MEANING OF

ARIA

Aria means “Air” in the Italian language and the choice of this name is based on two main concepts:

- Air is essential for human beings;
- In people's imagination, air represents lightness.

The association of these two concepts is what we want to communicate with the Aria brand.

CERTIFIED QUALITY

ISO 13485

**BUREAU VERITAS
Certification**



Aria Wheels has obtained the ISO 13485:2021 certification. We are pleased to announce that we have obtained the ISO 13485:2021 certification.

This certification confirms that our organization's management system has been evaluated and considered compliant with the rigid requirements set forth by the UNI CEI EN ISO 13485:2021 standard.

The ISO 13485:2021 standard is an international standard that establishes requirements for a quality management system (QMS) applicable to medical devices and related healthcare services.

USER TARGET

Our target is an active and independent user.
The ideal user is looking for an aesthetically pleasing and high-quality product.



NICOLA DUTTO
Off-road rider



ROBERTA MACRÌ
Content creator



ALEX INNOCENTI
Motorcycle Handy Rider



DIEGO GASTALDI
Content creator



ROGER HABSCH
Paralympic athlete



ANDREA PACINI
Professional skydiver



FEDERICO ROSSI
Athlete



FRANCESCA PORCELLATO
Paralympic athlete



MAXIME HORDIES
Paralympic athlete



CRAZY ON WHEELS
Content creators



FLORIAN JOUANNY
Paralympic athlete



KATIA AERE
Paralympic athlete

BRANDS

PRIN

FITBACK

WHEELCHAIR LINE

NRIN



TECHNOLOGY

Aria frames are made from two different materials:

- **Magnesium alloy** custom-designed for Aria
- **Aluminium alloy**

Magnesium is the lightest metal and significantly reduces the total weight of the wheelchair.

Other materials used in Aria products include:

- **Aluminium 7075** for the junction parts
- **Carbon fibre** for the rear wheel axle, backrests, side guards, seats, and footrest plates.

To preserve the quality of the frame over time, there are **two layers of protection**: one made with an anti-corrosion treatment and the second with an **epoxy powder coating**.

Thanks to **structural adhesives** assembled with innovative techniques, we guarantee excellent and high-performing joints. This ensures the lightest possible weight and the best overall performance.

PRODUCTS HISTORY

DATE OF FOUNDATION

Foundation of Aria Wheels



APRIL 2014

ARIA

OCTOBER 2015

1.0 Mg

Aria 1.0mg and the Aria backrest line are presented at the Rehacare Expo in Düsseldorf

2.0 AI & ULTRA

Launch of 2.0AI and Aria ULTRA



JANUARY 2018



APRIL 2020

KID

Launch of Aria KID, the first Aria's pediatric wheelchair

SPECIALE

Launch of Speciale, our 1st wheelchair with a welded magnesium frame



MARCH 2021

1.0

Introducing the new Aria 1.0 at Rehacare Expo in Düsseldorf



SEPTEMBER 2022

AGILE - PLIXA & FITBACK

Agile and Plixa models, and the FitBack brand introduced at Rehacare Expo in Düsseldorf



SEPTEMBER 2024

WHEELCHAIR RANGES

ADJUSTABLE

NEW 2025

AGILE



2.0 AI



ULTRN



KID



WELDED

Speciale



1.0



FOLDABLE

NEW 2025

PLIXN





AGILE NEW 2025

ADULT USER

FIXED FRAME

ADJUSTABLE

AGILE offers a range of features, including:

- Rear wheel axle available in aluminium or carbon fibre
- Frame options with an open or closed angle
- Choice of upholstery seat, fixed carbon fibre seat pan, or tilting carbon fibre seat pan

Why choose AGILE?

- Highly adjustable & customizable
- Most affordable starting price
- Solid and agile

2.0

ADULT USER

FIXED FRAME

ADJUSTABLE

The 2.0 configuration options include:

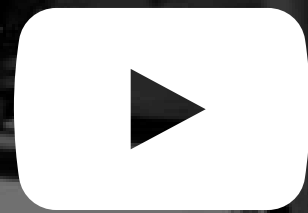
- The rear wheel axle is available in aluminium, magnesium alloy or carbon fibre
- Open or closed angle frame
- Lowered or standard frame

Why choose the 2.0 wheelchair?

- Rigid carbon fibre seat with the tilting system in standard configuration
- V-Front
- Highly customisable
- Multi-adjustable
- Solid and manoeuvrable



WHAT CAN BE ADJUSTED?



WATCH THE TUTORIAL VIDEO



ULTRON

ADULT USER

FIXED FRAME

ADJUSTABLE

A premium product that includes several options in the standard configuration to offer the maximum lightweight, including:

- magnesium alloy axle
- carbon fibre seat with a tilting system
- carbon fibre side guards
- carbon fibre brake support and seat brackets
- superlight fork support

Why choose ULTRA?

- Optional extras included
- V-front
- Premium Multi-adjustable
- Ultra-lightweight - only 4.8 kg!
- Comfortable and dynamic

WHAT CAN BE ADJUSTED?



WATCH THE TUTORIAL VIDEO





KID

PEDIATRIC USER

FIXED FRAME

ADJUSTABLE

The possible adjustments are:

- Seat depth
- Backrest inclination
- Knee-to-heel length
- Centre of gravity measurement
- Front and rear height

Why choose KID?

- Straight frame or with abduction
- Adaptable to growth
- Manoeuvrability and smoothness

WHAT CAN BE ADJUSTED?



WATCH THE TUTORIAL VIDEO



Speciale

ADULT USER

FIXED FRAME

WELDED

Despite being a welded fixed-frame wheelchair, SPECIALE offers several options to suit the user's needs perfectly.

These possibilities include:

- Single or double-tube frame
- Foldable and adjustable backrest
- Upholstery seat, carbon fibre seat fixed to the frame or with a tilting system

Why choose SPECIALE?

- V-Front
- Ultra-lightweight - only 3.9 kg!
- Comfortable
- High performance

WHAT CAN BE ADJUSTED?



WATCH THE TUTORIAL VIDEO



1.0

ADULT USER

FIXED FRAME

WELDED

Ideal for experienced users, this model offers plenty of possibilities to create a wheelchair that perfectly suits your unique needs.

The main options include:

- 5 angles of inclination for the ergonomic seat
- 5 measures for the centre of gravity
- Possibility of welding the footrest

Why choose Aria 1.0?

- T-Front
- Ergonomic seat
- Postural backrest included
- Iconic design
- Rigid and highly responsive



NEW 2025

PLIXA

ADULT USER

FOLDABLE

ADJUSTABLE

Lightweight and effortlessly foldable, PLIXA is engineered to make daily life easier. Its design reflects Aria's signature aesthetic—clean lines and high performance.

Adjustment options include:

- Centre of gravity
- Rear and front seat height
- Backrest angle and height

Why choose PLIXA?

- Foldable wheelchair
- Lightweight
- Easy to manoeuvre
- *Look and feel* of a rigid wheelchair

ACCESSORIES

smooth

SHOCK-ABSORBED FORK

Patented by Aria Wheels, this shock-absorbing fork allows you to enjoy every outdoor adventure, providing a smoother ride on any terrain with freedom and carefreeness.

SMOOTH is compatible with most wheelchairs on the market, making it an essential accessory for those seeking increased comfort and stability while riding.

Why choose SMOOTH?

- Exceptional vibration absorption
- Smoothness on uneven terrain
- Compatible with most wheelchairs on the market



HOW TO ASSEMBLE *s///ooth*[®]



WATCH THE TUTORIAL VIDEO

BACKREST LINE

FITBACK



FITBACK

For over 10 years, Aria Wheels has been passionately dedicated to designing and producing ultra-lightweight wheelchairs, postural backrests, and accessories, maintaining a constant commitment to innovation and excellence. Every product is crafted to ensure superior performance and unparalleled quality, enhancing users' daily lives with uncompromising freedom and comfort.

FitBack was created to further expand postural solutions for wheelchairs, reflecting Aria's commitment to offering products that elevate the quality of life and promote greater mobility independence.

The FitBack backrest range combines aesthetics and performance, with clean lines and ultra-lightweight materials. All products are designed to ensure proper posture and maximum comfort.

HALO

Ideal for those seeking greater trunk stabilization and support.

ADULT USER

ALUMINIUM SHELL

ACTIVE AND DEEP VERSIONS

12 DIFFERENT SIZES

CENTRAL OR LATERAL CLAMPS



AERO

Ideal for those seeking optimal stabilisation of the trunk while maintaining lightness and freedom of movement.

ADULT USER

CARBON SHELL

6 DIFFERENT SIZES

CENTRAL OR LATERAL CLAMPS



FLEXY

Designed for those with an active lifestyle
who prefer minimal trunk support.

ADULT USER

CARBON SHELL

6 DIFFERENT SIZES

CENTRAL OR LATERAL CLAMPS



BUDDY

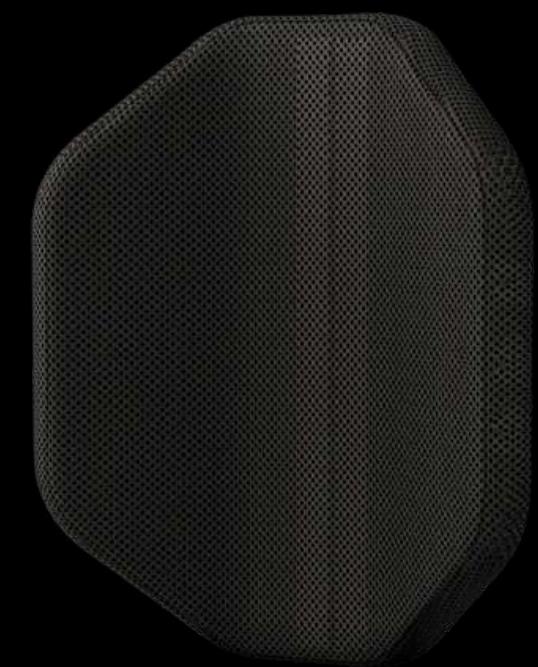
Designed to support a child throughout their growth.

PEDIATRIC USER

ALUMINIUM SHELL

4 DIFFERENT SIZES

CENTRAL CLAMP



CENTRAL CLAMPS



CLACE



CLAR1

Compatibility	CLACE	CLAR1	CLALA	CLAQR
FLEXY	●*	●	●	●
HALO	●*	●	●	●
AERO	●*	●	●	●
BUDDY	●*	●		

*Requires an adapter for assembly

LATERAL CLAMPS



CLALA



CLAQR

	CLACE	CLAR1	CLALA	CLAQR
Adjustable Height	●	●	●	●
Adjustable Angle				●
Adjustable Depth*	●	●	●	●
Mountable on diameter	25 22 19	30 25 22	25 22	25 22

*Forward movement only

SERVICES

1

TRAINING

We follow our dealers step by step in the discovery of Aria products: how to adjust them, how to take care of them, how to assist the customer, etc.



SERVICES

2

ONLINE CONFIGURATOR

Thanks to the online configurator, we offer to dealers a personal space where they can create and save orders and sales proposals for their customers.

The screenshot displays a dark-themed online configurator interface for a wheelchair. At the top, a navigation bar lists categories: FRAME, SEAT, POSTURAL BACKREST, FOOTREST, BRAKES, REAR WHEELS, FRONT CASTERS, SIDE GUARDS, and ACCESSORIES. The main content is organized into sections:

- Frame type:** A grid of four options, each with a wheelchair icon, a radio button, and a description. The second option is selected.
 - Option 1: Frame with SHF | SHR difference of 20mm (86° ANGLE). Not adjustable after sale.
 - Option 2 (Selected): Frame with SHF | SHR difference of 60mm (78° ANGLE). Not adjustable after sale.
 - Option 3: Frame with SHF | SHR difference of 40mm (82° ANGLE). Not adjustable after sale.
 - Option 4: Frame with SHF | SHR difference of 80mm (74° ANGLE). Not adjustable after sale.
- Frame sizes:** A sub-section containing three sliders:
 - Seat width (SW):** A slider with a green marker, ranging from 380 to 400. Not adjustable after sale.
 - Seat depth (SD):** A slider with a green marker, ranging from 420 to 440. Not adjustable after sale.
 - Seat length (SL):** A slider with an orange marker, ranging from 400 to 420. SL depends on SD.
- Camber Rear Wheels (CRW):** A slider with a green marker, ranging from 0 to 10. Not adjustable after sale.

SERVICES

3

MARKETING SUPPORT

We follow and support our dealers for the right promotion of the Aria products aimed to grow the sales and bring visibility. In addition, we support with a different type of videos useful for the assessments and for an easier communication.



INTERNATIONAL PRESENCE



DEALER

PRODUCT SPECIALIST

PREMIUM DEALER

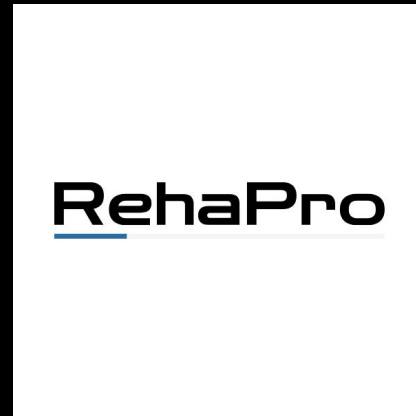
DISTRIBUTOR

ARIA WHEELS HQ

CONTACTS

RehaPro Sarl

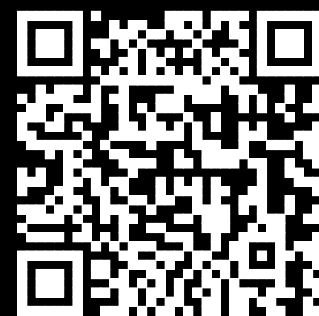
38C, Route de Jussy
1226 Thônex - Switzerland
Email: hugo.baeriswyl@rehapro.ch
www.rehapro.ch



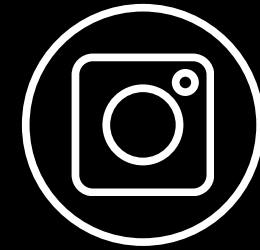
ariawheels.com



fit-back.it



facebook.com/Officialariawheels



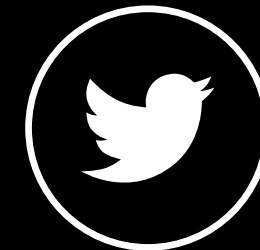
instagram.com/ariawheels



tiktok.com/@ariawheels



youtube.com/c/AriaWheels



twitter.com/AriaWheels



linkedin.com/company/aria-wheels